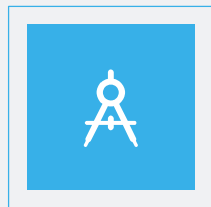




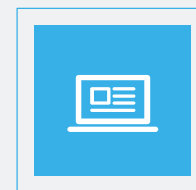
110學年度統一入學測驗試題研討會 英文科



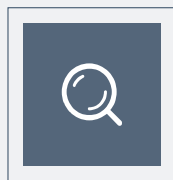
01 |
整卷分析



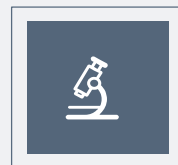
03 |
難易度及鑑別度分析



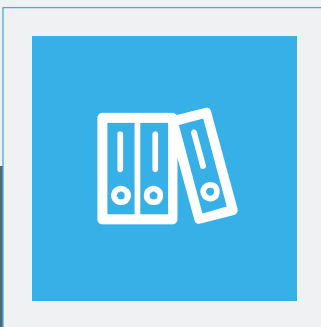
05 |
試題評論



02 |
評量架構



04 |
題例說明



01 | 整卷分析

- ✓ 施測結果分析
- ✓ 成績分布圖
- ✓ 106-110學年度平均分數

選擇題41題(82分)
非選擇題3題(18分)
總分100分

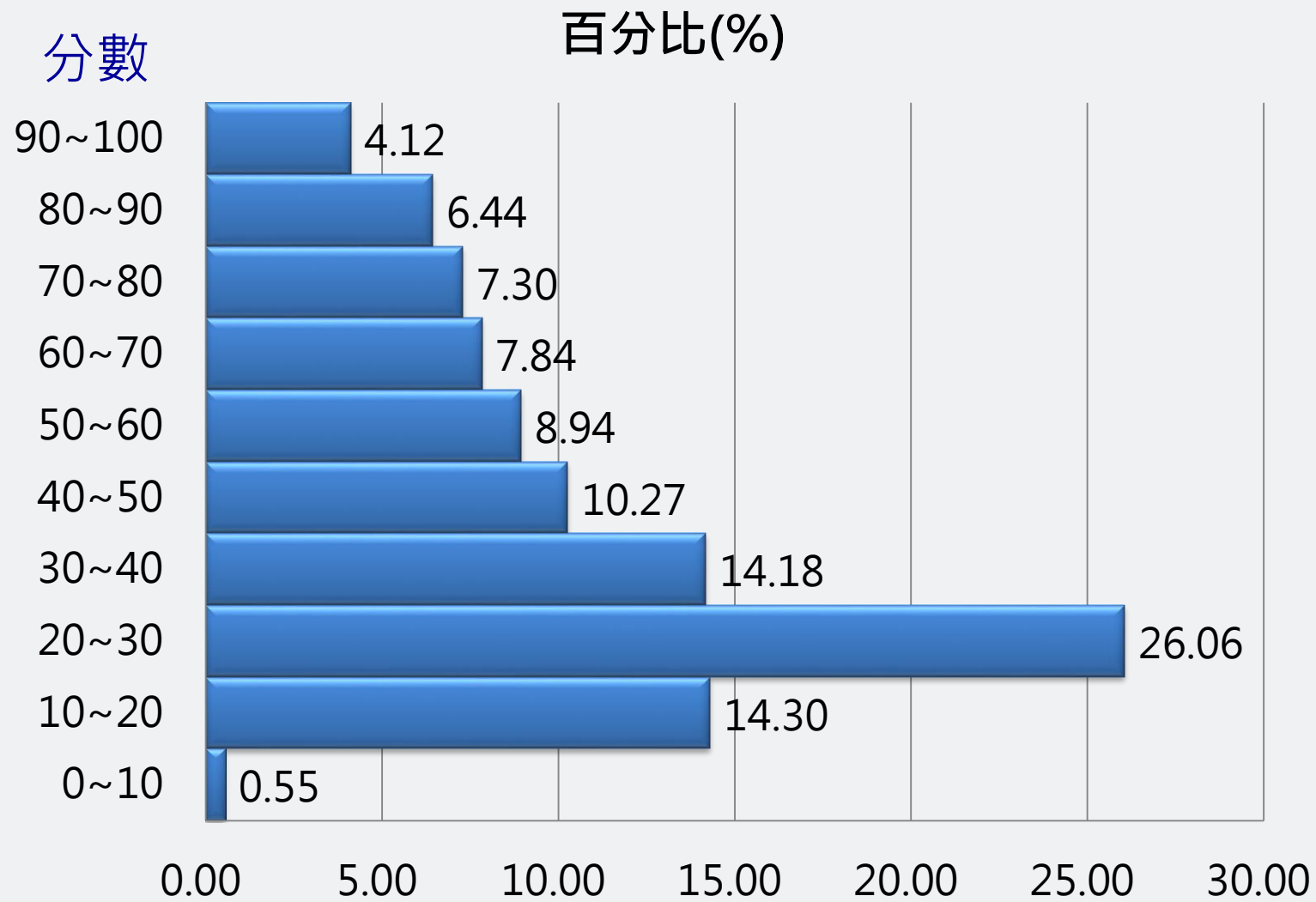
整卷分析

- 評量架構
- 難易度
鑑別度分析
- 題例說明
- 試題評論

	到考人數	平均分數	標準差	信度	極值
110 學年度	83,503	43.47	23.52	0.9	0,100
109 學年度	90,291	41.98	22.4	0.9	0,100

整卷分析

- 評量架構
- 難易度
鑑別度分析
- 題例說明
- 試題評論



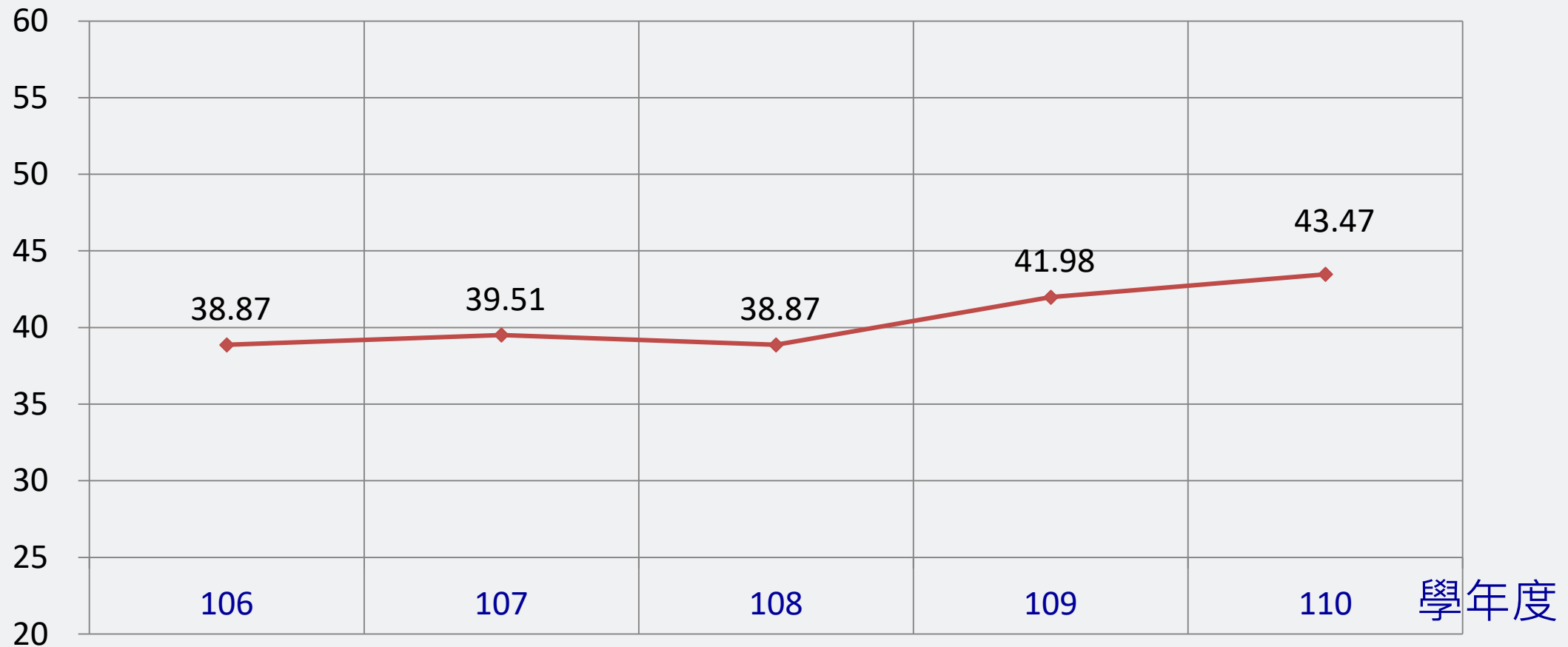
110學年度

英文

平均分數：43.47

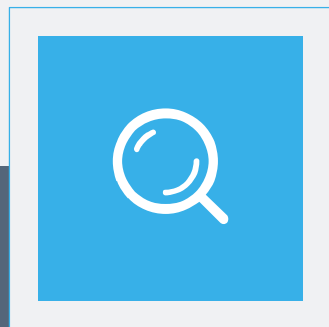
百分比

分數 106-110學年度平均分數



整卷分析

- 評量架構
- 難易度
鑑別度分析
- 題例說明
- 試題評論



02 | 評量架構

✓ 英文

評量架構-共同科一 (英文)



測驗內容	題數	小計(配分)
一、人際關係	3	6
二、休閒、娛樂與運動	0	0
三、日常生活	10	20
四、現代科技	8	16
五、文化與風俗民情	2	4
六、文學與藝術	0	0
七、語言	3	6
八、工、商、農業等知識	0	0
九、環境教育	2	4
十、就業	2	4
十一、國際觀	2	4
十二、國際觀與環境	4	8
十三、旅遊、運輸與交通	5	10
合計	41	82



整卷分析



評量架構



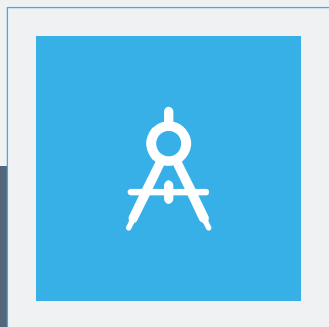
難易度
鑑別度分析



題例說明



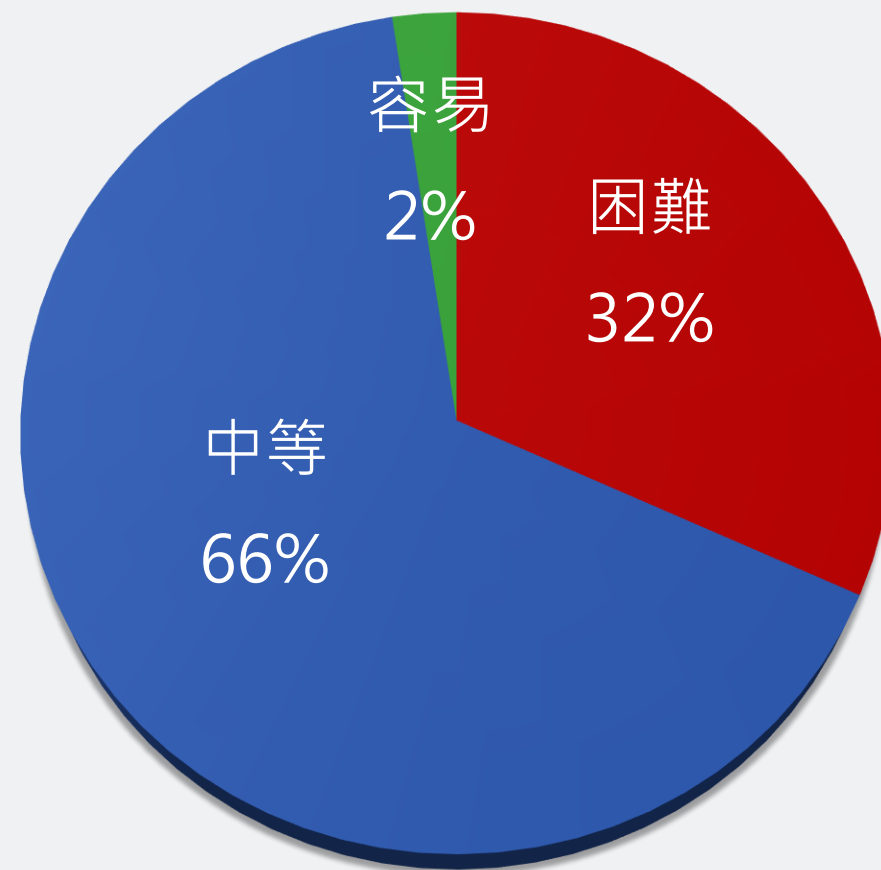
試題評論



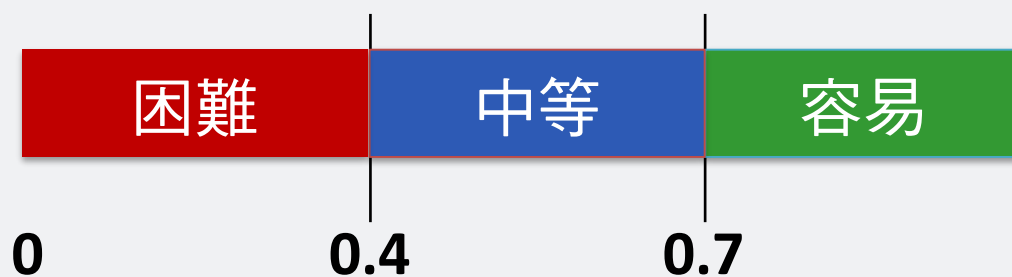
03 | 難易度及鑑別度分析

- ✓ 試題分析指標的涵義
- ✓ 難易度與鑑別度交叉表

整卷試題分析



難易度	難易度等級
$P < 0.4$	困難
$0.4 \leq P < 0.7$	中等
$0.7 \leq P$	容易



難易度分布



整卷分析



評量架構



**難易度
鑑別度分析**



題例說明



試題評論



整卷分析



評量架構



**難易度
鑑別度分析**

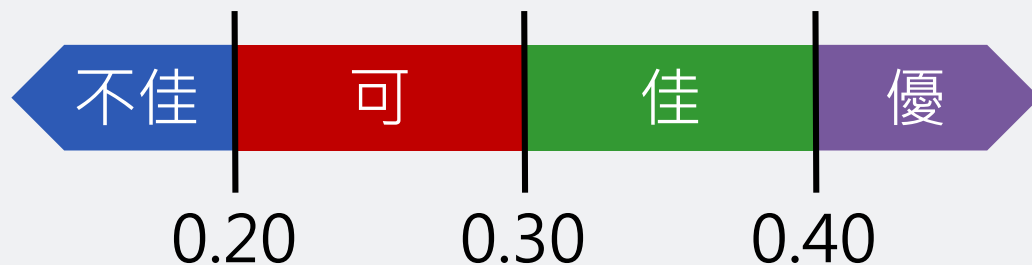


題例說明

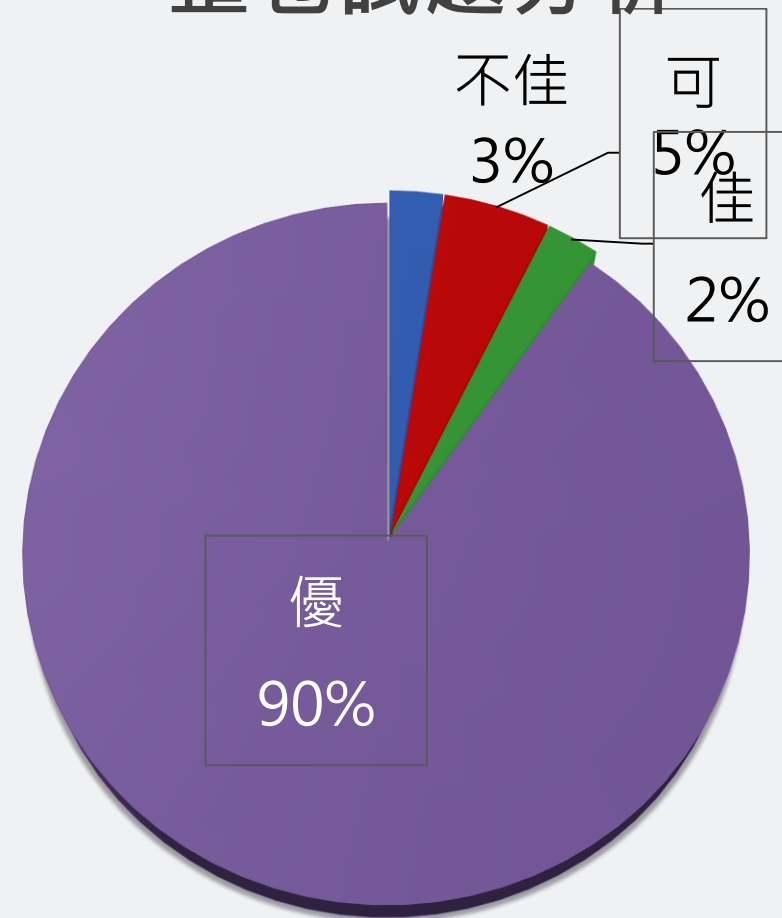


試題評論

鑑別指數	試題評鑑
$D < 0.2$	不佳
$0.2 \leq D < 0.3$	可
$0.3 \leq D < 0.4$	佳
$0.4 \leq D$	優



整卷試題分析



鑑別度分布

難易度與鑑別度交叉表



		難易度		
		困難	中等	容易
鑑別度	不佳	36		
	可	28.38		
	佳	31		
	優	5.6.7.11.16.19.22.25. 29.37	1.2.3.4.8.9.10.12. 13.14.15.17.18.20.21.23. 24.26.27.30.32.33.34.35. 39.40.11	



整卷分析



評量架構



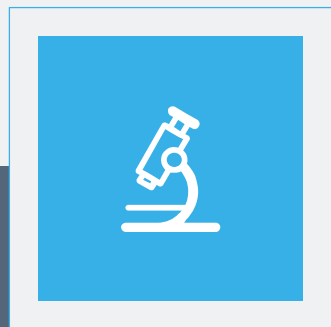
難易度
鑑別度分析



題例說明



試題評論



04 | 題例說明

Imagine getting into your car, speaking a location into your car's computer, and then letting it drive you to your destination. The idea behind self-driving cars is fairly simple: build a car with a computer that is connected with many cameras which can track all the objects close to it, give the computer all the driving rules and routes, and then the computer should be able to drive to the destination.



There are many benefits of self-driving cars. Research shows that using self-driving cars can greatly reduce the number of cars on the street because 80 % only have one person driving alone in a car. Self-driving cars can also lower the cost of transportation, which is 18 % of a person's income in the U.S.A. Besides, "These cars won't get drunk, drive too fast, or take risks," said the CEO of Fastcar, John Smith.

Early estimates suggested that self-driving cars would be the standard in 2020, but instead there were only a few research vehicles on the road in 2020. As the technology is currently under research and being improved, it is likely in the near future that we will see self-driving cars move safely on public roads among traditional cars. When they arrive, their cost, safety and convenience will make them part of our daily lives. Companies that research self-driving cars which plan ahead, adjust the quickest, and imagine the most will succeed.

- What is the main idea of this article?
- (A) Setting up self-driving car companies
 - (B) Driving rules for self-driving cars
 - (C) The costing of self-driving cars
 - (D) The coming of self-driving cars



鑑別度
優良試題

 整卷分析 評量架構 難易度
鑑別度分析 題例說明 試題評論

題例說明

選項	A	B	C	D*	未答	CTT 難度	CTT 鑑別度
選答比例	16.59	21.12	17.98	44.14	0.17		
高分組 (選答比例)	3.14	1.76	1.49	93.57	0.03	0.44	0.79
低分組 (選答比例)	22.27	30.09	32.76	14.51	0.36		

鑑別度
優良


- 整卷分析
- 評量架構
- 難易度
鑑別度分析
- 題例說明**
- 試題評論

In 2020, the United Nations World Food Program (WFP) was awarded the Nobel Peace Prize for its efforts to fight hunger, to help bring about peace, and to prevent the use of hunger as a weapon of war. The WFP focuses its work on hunger and food security issues. In 1962, the organization shipped wheat, sugar and tea to Iran after an earthquake killed 12,000 people. Since then, it has been helping victims of natural disasters.

Other areas of work include the school meals program which covered about 17 million children in 2019. The WFP believes that food security and peace go hand in hand. The world cannot end hunger without putting an end to conflict. In 2010, the WFP successfully resolved a conflict situation in Central Asia. Several villages on the border of two countries were quarreling over water resources. The WFP helped to rebuild water supply systems which were shared across borders and provided food for people who joined in the construction.

In 2017, millions of people in the Arab country of Yemen were close to starving in the war between rival groups. Some of these groups cut off food supplies to cause fear in the population. However, WFP workers managed to bring wheat flour to people in need, preventing the use of hunger as a weapon of war. About 100 million people received WFP food assistance in 2020. By winning the Nobel Prize, the WFP hopes that it will draw attention to the problem of hunger.

36. Why was the 2020 Nobel Peace Prize given to the WFP?
- (A) For putting an end to war and natural disasters
 - (B) For protecting people from hunger and conflicts
 - (C) For preventing the use of hunger and weapons in war
 - (D) For persuading people to welcome food aid and conflicts




鑑別度
不佳試題



整卷分析




評量架構



難易度
鑑別度分析



題例說明



試題評論

題例說明

選項	A	B*	C	D	未答	CTT 難度	CTT 鑑別度
選答比例	10.81	30.65	46.69	11.74	0.12	0.31	0.17
高分組 (選答比例)	1.74	41.37	55.61	1.25	0.03		
低分組 (選答比例)	18.22	24.81	36.76	19.92	0.28		

鑑別度不佳

0.17

- 整卷分析
- 評量架構
- 難易度
鑑別度分析
- 題例說明**
- 試題評論

The eastern part of Taiwan is a place of natural beauty. However, it is also an area 27 earthquakes occur very often. The government has recently completed work on an undersea cable system to detect earthquakes and tsunamis. The system makes it possible for people 28 about 10 seconds before an earthquake strikes. The purpose is to reduce 29 and injuries. Starting in 2011, cables were put under the sea on the east coast. The location was chosen 30 most of the earthquakes happen there. The undersea cable system stretches for 735 km, with nine points 31 its entire length to detect the quakes. The deepest detection point lies 5,554 m under the sea.

31.
(A) along
(B) during
(C) except
(D) since



整卷分析



評量架構

難易度
鑑別度分析

題例說明



試題評論

題例說明

選項	A*	B	C	D	未答	CTT 難度	CTT 鑑別度
選答比例	26.08	28.42	27.32	18.08	0.10	困難度 高	
高分組 (選答比例)	48.77	26.85	13.86	10.51	0.01	0.26	0.31
低分組 (選答比例)	17.61	28.41	34.72	19.07	0.18		

困難度
高

0.26

26.08
48.77
17.61

- 整卷分析
- 評量架構
- 難易度
鑑別度分析
- 題例說明**
- 試題評論

The notice below is a guideline for tourists in a national park – “Leave No Trace”. Read the notice and answer the following questions.

LEAVE NO TRACE Travel Principles	
	PLAN AHEAD Know the regulations of the places you’re visiting
	RESPECT WILDLIFE Do not approach wildlife
	LOOK WITH YOUR EYES, NOT WITH YOUR HANDS Admire cultural/historic objects at a distance and follow paths
	WHAT YOU FIND STAYS BEHIND Shells and sand stay on the beach; fruit, wood, and seeds should be left to keep trees healthy
	WASTE & RECYCLING Learn local recycling and waste laws, ask if unsure
	BE CONSIDERATE OF OTHER VISITORS Keep noise to a minimum; allow everyone a turn to admire the sights at viewing points or platforms



-  整卷分析
-  評量架構
-  難易度
鑑別度分析
-  **題例說明**
-  試題評論



整卷分析



評量架構



難易度
鑑別度分析



題例說明



試題評論

32. Which of the following is NOT encouraged by the travel principles?

- (A) Collect shells on the beach.
- (B) Speak quietly to your friends.
- (C) Understand the rules and regulations.
- (D) Take pictures of birds from far away.

33. What do the travel principles probably want visitors to do?

- (A) To study law in order to reach wildlife
- (B) To allow everyone to express their views
- (C) To keep nature the same as much as possible
- (D) To clean their hands before touching anything



題例說明-32

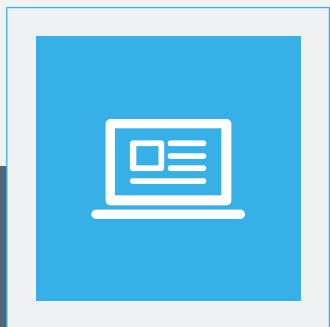
選項	A*	B	C	D	未答	CTT 難度	CTT 鑑別度
選答比例	48.00	23.49	14.86	13.56	0.09	0.48	0.78
高分組 (選答比例)	93.72	3.08	0.55	2.65	0.00		
低分組 (選答比例)	15.88	32.25	33.18	18.43	0.26		

- 整卷分析
- 評量架構
- 難易度
鑑別度分析
- 題例說明**
- 試題評論

題例說明-33

選項	A	B	C*	D	未答	CTT 難度	CTT 鑑別度
選答比例	12.86	20.70	55.37	10.97	0.11	0.55	0.59
高分組 (選答比例)	2.36	6.70	90.58	0.36	0.01		
低分組 (選答比例)	20.43	29.00	31.42	18.89	0.26		

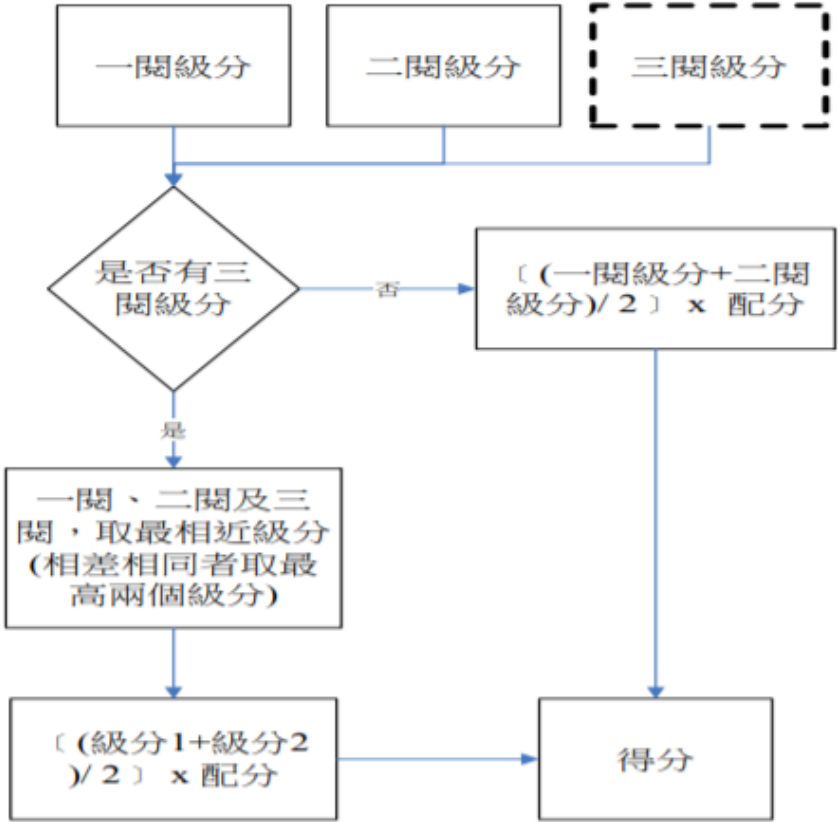
-  整卷分析
-  評量架構
-  難易度
鑑別度分析
-  **題例說明**
-  試題評論



05 | 非選擇題分析

四技二專統一入學測驗共同科目英文科非選擇題型閱卷流程

共同科目英文科非選擇題型以電腦管理閱卷流程，並採線上閱卷，分為一閱、二閱及三閱（如下圖）。考生作答結果經一閱、二閱後，若兩閱同級分或相差一級分，則取其平均值做為非選擇題級分；若兩閱相差兩級分或以上，則進行三閱，並以三者（一閱、二閱、三閱）中差距最小的兩個級分的平均值做為非選擇題級分。



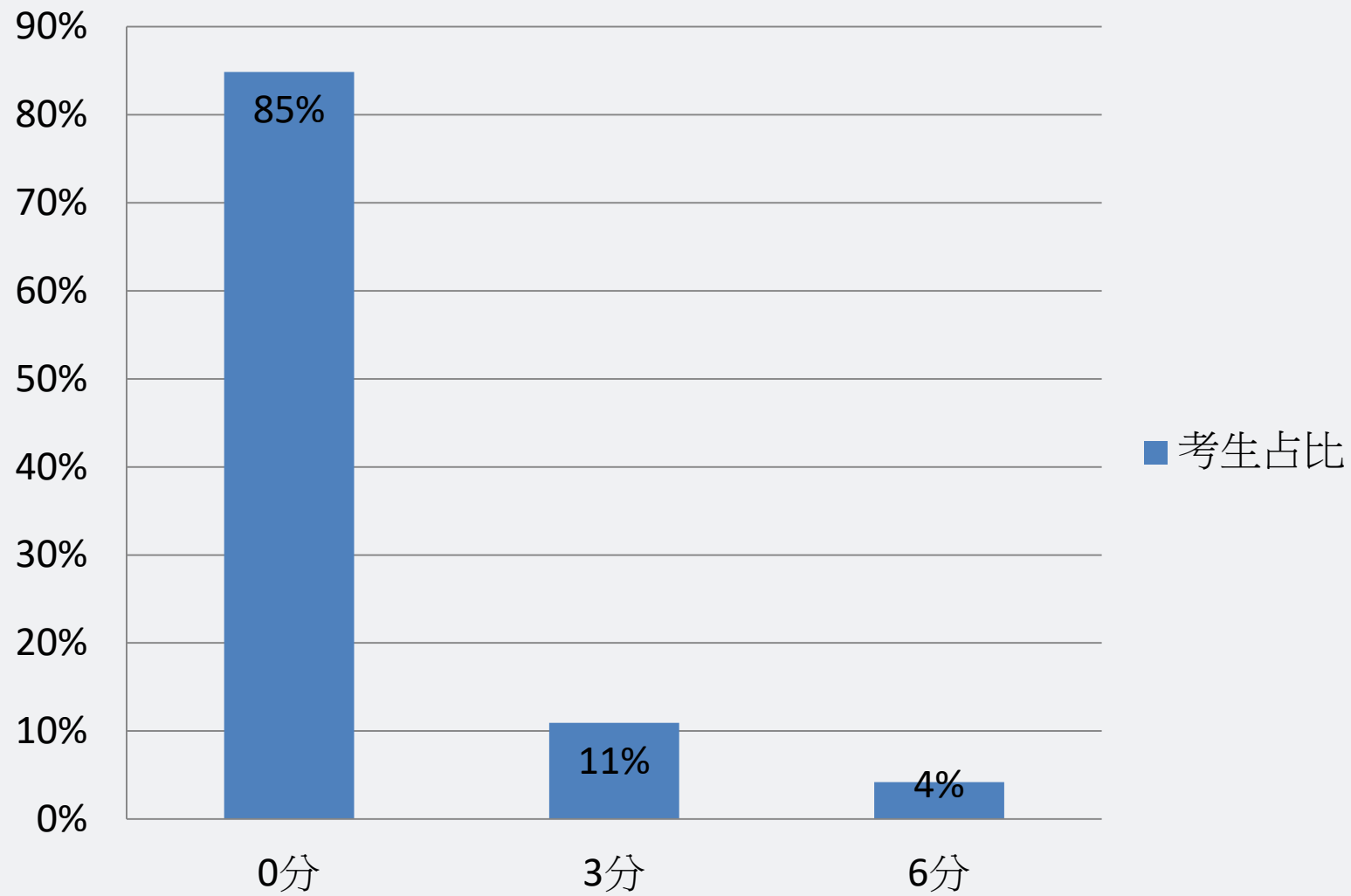
I. 填充

本題型評量考生正確運用英文字彙及拼寫的能力。考生須根據中文題意，在英譯句子的兩個空格裡，依提示之字首，依序填入與中文(充足的、壓力)相對應之英文單字。每格正確得2級分，兩格皆正確得4級分。

為保持健康，均衡的飲食、充足的運動及避免過多的壓力是有必要的。
 To stay healthy, it is necessary to have a balanced diet and s__①__ exercise,
 and to avoid too much p__②__.

參考答案：
 sufficient
 pressure

級分	說明
4	2個空格皆正確。
2	僅1個空格正確。
0	2個空格皆錯誤。



II. 句子重組

本題型評量考生掌握英文語法的能力。考生須依正確的英文語法，將分割的字詞，重組成正確、通順、達意的英文句子。

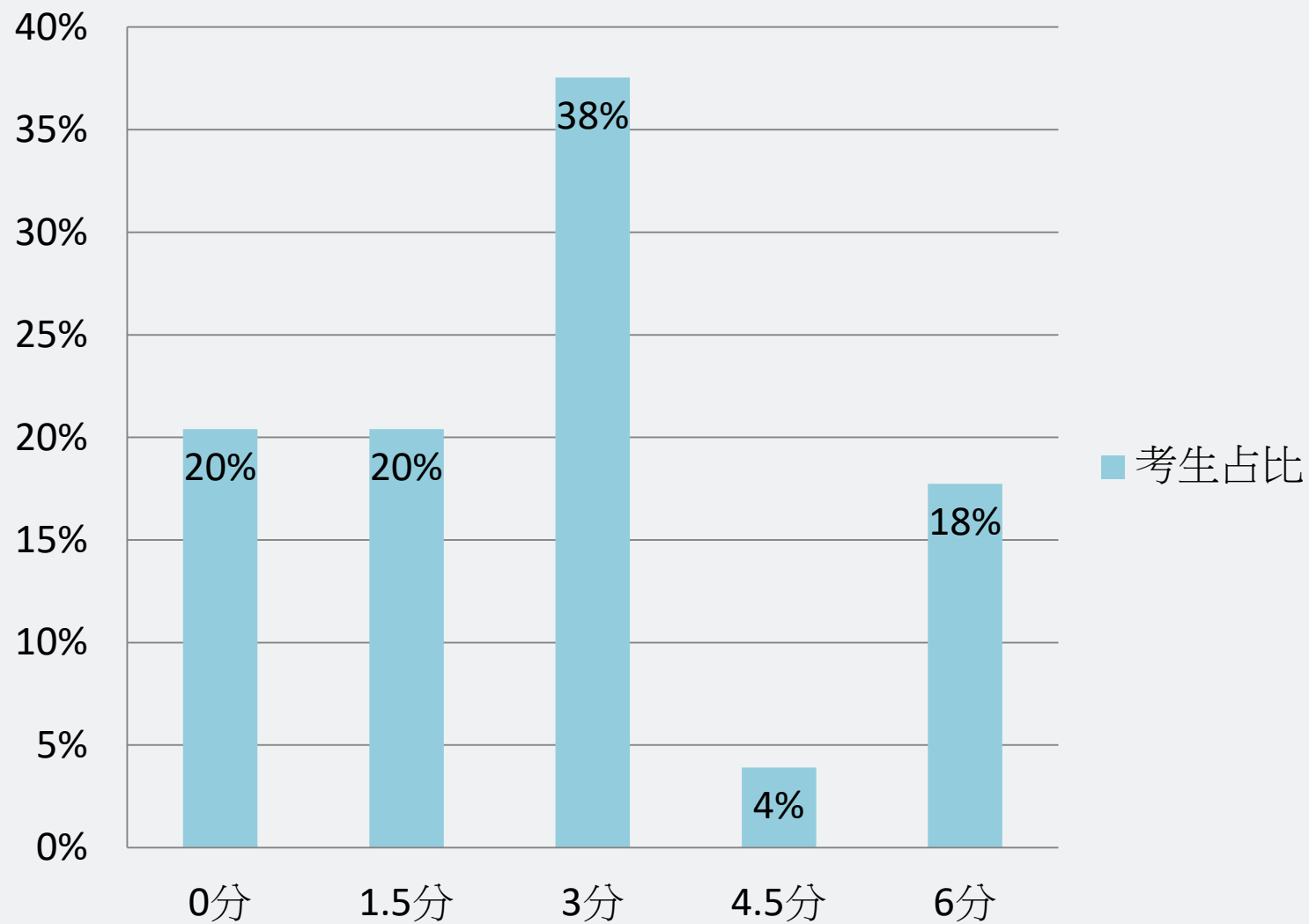
2. in the economy / All governments / due to / predicted a decline /
the COVID-19 pandemic

◆ 參考答案：

All governments predicted a decline in the economy due to the COVID-19 pandemic.

◆ 評分說明：

級分	評分說明
4	所有字詞組合正確，且拼字、大小寫及標點均無誤。
3	(1) 所有字詞組合正確，但有拼字、字詞增減或標點錯誤。 (2) 多數字詞組合正確，且無拼字、字詞增減或標點錯誤。
2	(1) 多數字詞組合正確，但有拼字、字詞增減或標點錯誤。 (2) 半數字詞組合正確，且無拼字、字詞增減或標點錯誤。
1	(1) 半數字詞組合正確，但有拼字、字詞增減或標點錯誤。 (2) 少數字詞組合正確，且無拼字、字詞增減或標點錯誤。
0	(1) 少數字詞組合正確，但有拼字、字詞增減或標點錯誤。 (2) 所有字詞組合錯誤。 (3) 只抄引導文字、題目或其他試題。 (4) 空白(未書寫文字)。



III. 中譯英

本題型評量考生運用適當詞彙及英文句型結構的翻譯能力。考生須將中文句子譯成正確、通順、達意的英文。

3. 有些學校將會帶他們的學生去動物園。

◆ 參考答案：

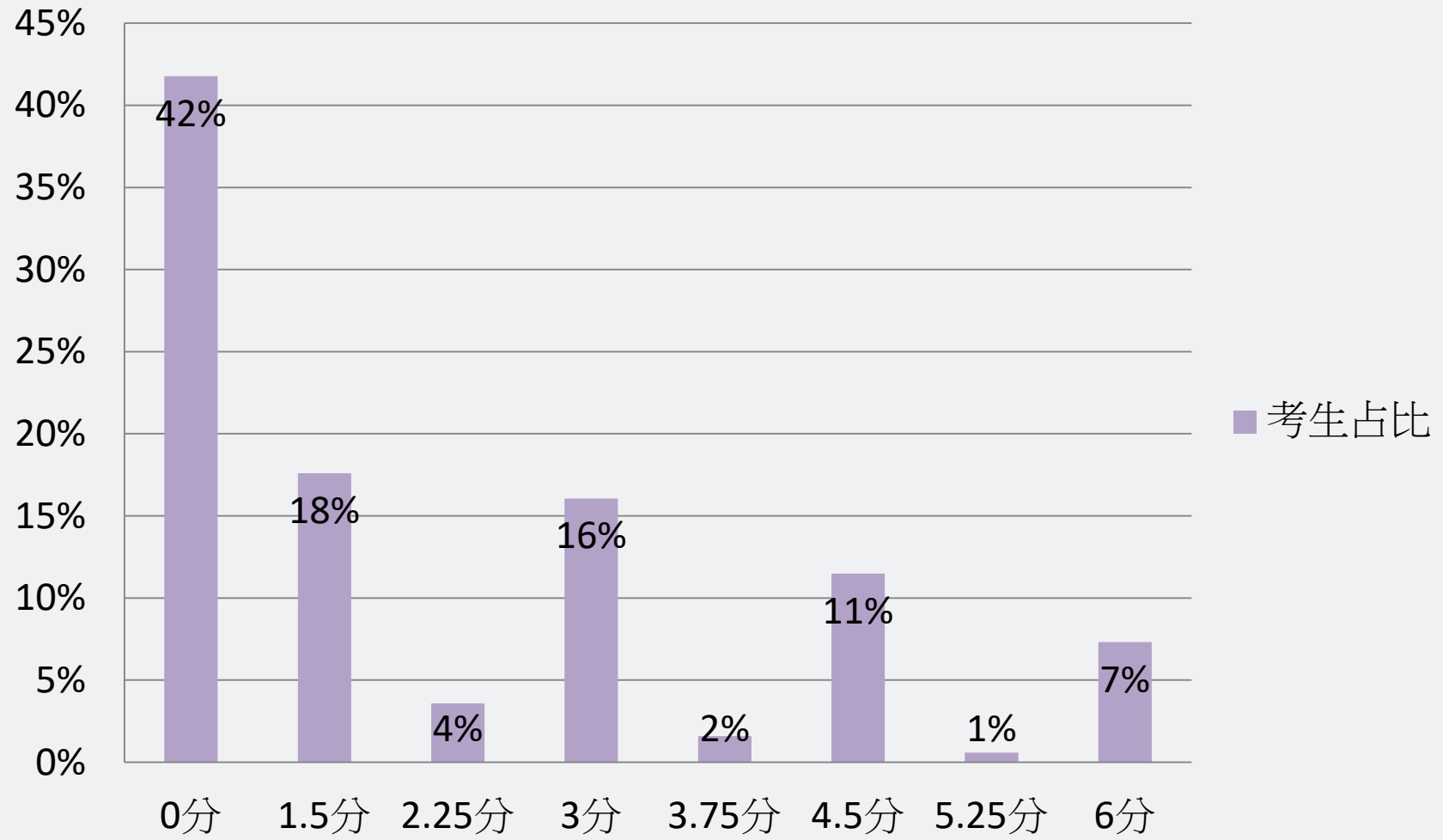
例如：Some schools will take their students to the zoo.

Some (of the)	schools	will shall are going to are about to	take	their	students pupils	(to go)	to the zoo(s).
A few (of the)							to a zoo.
Several (of the)						to zoos.	
A number of (the)						to the animal park(s).	
						to visit	to an animal park.
							to animal parks.
							the zoo(s).
							a zoo.
							zoos.
							the animal park(s).
							an animal park.
							animal parks.

◆ 評分說明：

級分	說明
4	能充分表達原文題意，文法、標點正確，用字遣詞沒有不當之處。
3	能適切表達原文題意，文法、標點、用字遣詞僅有少數不當之處。
2	僅能部分表達原文題意，文法、標點、用字遣詞有多處失當之處。
1	無法表達原文題意，文法、標點、用字遣詞僅有少數正確之處。
0	(1) 空白(未書寫文字)。 (2) 文字瑣碎、形同未答。 (3) 只抄題目或其他試題。 (4) 內容完全離題或錯誤。



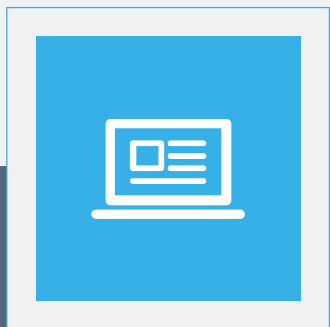


110學年度考生答題常犯錯誤及作答注意事項



常犯錯誤	考生作答注意事項
拼寫英文字詞時，大、小寫不分。	務必檢查單字之大、小寫是否正確無誤。
書寫單字時，字彙間缺乏適當間隔，導致難以辨識。	書寫單字時，字彙間保留適當間隔，避免出現整段文字毫無間隔地連續書寫。
英文單字字母書寫潦草，難以辨識，如u/n、t/e、c/l、w/m、f/t、r/v、r/n及h/n。	英文單字字母書寫應工整可辨。
句子重組同時書寫兩組答案，或重複抄寫某些重組單位。	根據作答規定，提供一句重組答案，勿寫下兩種不同的答案。
句子重組題自行增減字詞及更改、變化字詞。	依據提示的字詞，抄寫、重組成一完整句子，勿自行增減字詞或修改變化字詞。
用中文句點取代英文句點。	勿在英文句子中使用中文的標點符號。
答案中出現修改擦拭未淨的痕跡。	答案如有塗改，須擦拭乾淨，勿留下與答案無關之書寫痕跡，以確保答案清晰可辨。
答案書寫超出作答區。	在規定之答題區內作答。
將單字任意拆解，於不同兩行呈現。	書寫單字應在同一行完整呈現，勿任意拆解單字。





06 | 試題評論



整卷分析



評量架構

難易度
鑑別度分析

題例說明



試題評論



- 命題具鑑別度，主題結合生活與時事，素養命題比例增加。
- 主題貼近生活，取材多元，包含職場、科技、自駕車、國際時事 (各國習俗介紹及本土地震帶議題)。
- 素養題命題難度大幅增加，考驗學生閱讀策略技巧、字彙代換能力。

謝謝聆聽

THANK YOU